

Henry 2DW1 LWD RT 500MD

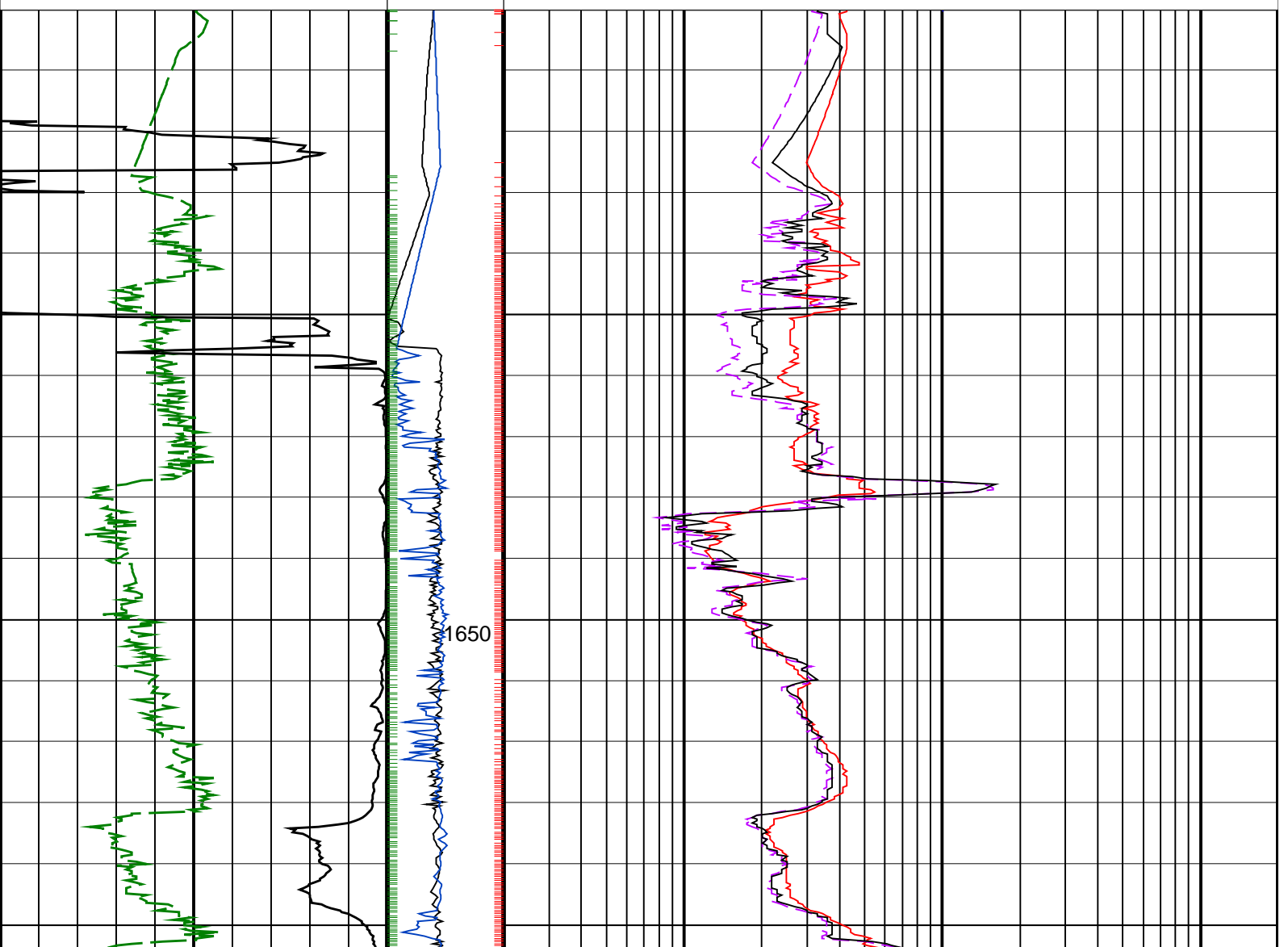
IDEAL Version: ID13_OC_11 <MD > Vertical Scale: 1:500

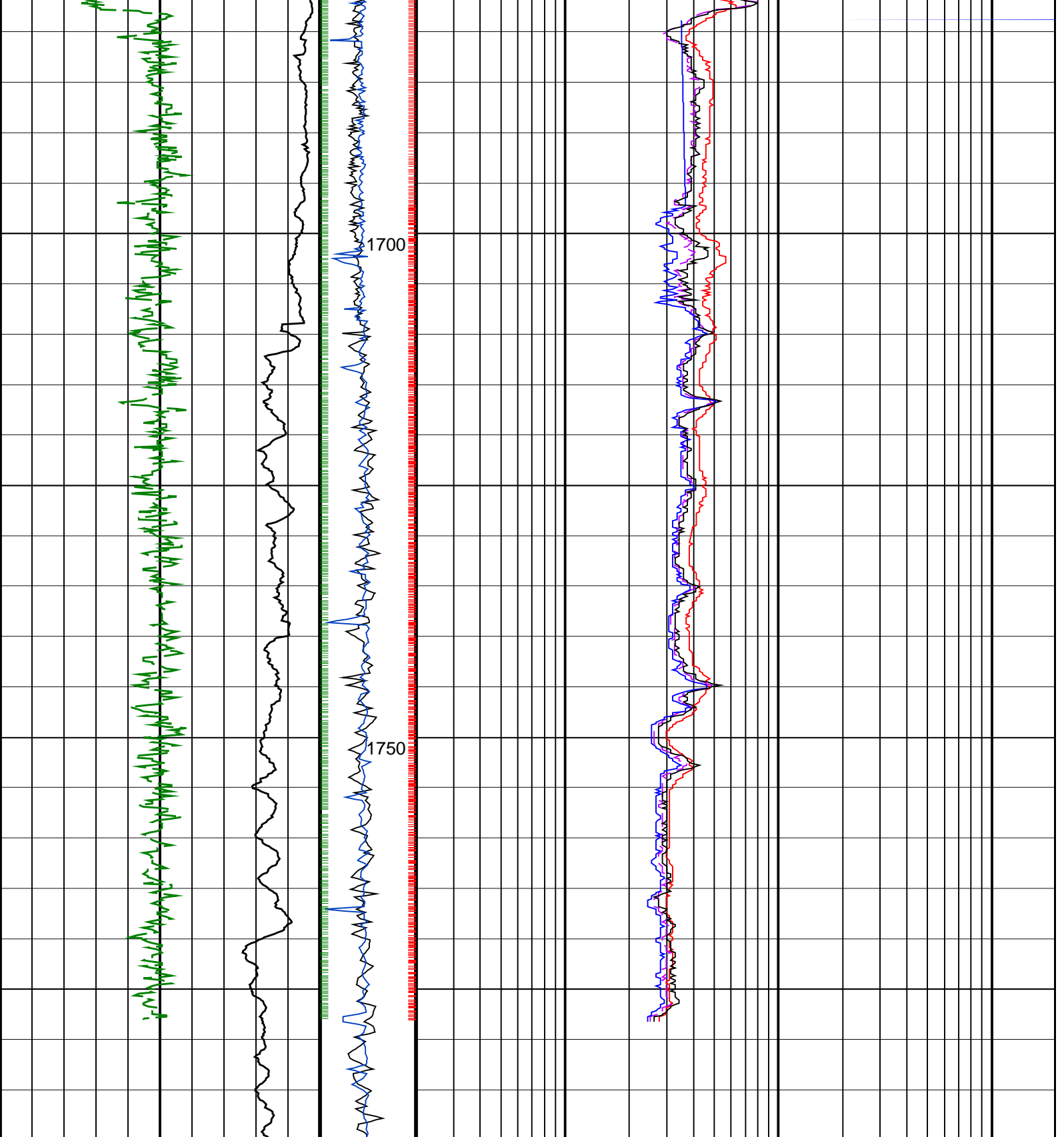
Graphics File Created: 17-Sep-2008 14:12

PIP SUMMARY

- ├ ARC Gamma Ray Samples
- ├ ARC Resistivity Samples
- ├ IMP RP28 PIP

		ARC BHCorr Phase-Shift Resistivity 40-in. at 2 MHz, Real-Time (P40H_RT)	0.2	(OHMM)	200
		ARC BHCorr Phase-Shift Resistivity 16-in. at 2 MHz, Real-Time (P16H_RT)	0.2	(OHMM)	200
ARC Gamma Ray, Real-Time (ARC_GR RT) (GAPI)	MWD Collar RPM (CRPM_RT) (RPM)	ARC BHCorr Phase-Shift Resistivity 28-in. at 2 MHz, Real-Time (P28H_RT)	0.2	(OHMM)	200
0	0 250				
ROP*5 (ROP5) (M/HR)	PKPK RPM (Stick_RT) (RPM)	ARC BHCorr Attenuation Resistivity 40-in. at 2 MHz, Real-Time (A40H_RT)	0.2	(OHMM)	200
200	0 500				





ROP*5 (ROP5) (M/HR)	PKPK RPM (Stick_RT) (RPM)	ARC BHCORR Attenuation Resistivity 40-in. at 2 MHz, Real-Time (A40H_RT) (OHMM)
0	0	0.2
200	500	200

ARC Gamma Ray, Real-Time (ARC_GR_RT) (GAPI)	MWD Collar RPM (CRPM_RT) (RPM)	ARC BHCORR Phase-Shift Resistivity 28-in. at 2 MHz, Real-Time (P28H_RT) (OHMM)
0	0	0.2
200	250	200

		ARC BHCORR Phase-Shift Resistivity 16-in. at 2 MHz, Real-Time (P16H_RT) (OHMM)
		0.2
		200

PIP SUMMARY

- ┆ ARC Gamma Ray Samples
- ┆ ARC Resistivity Samples
- ┆ IMP RP28 PIP